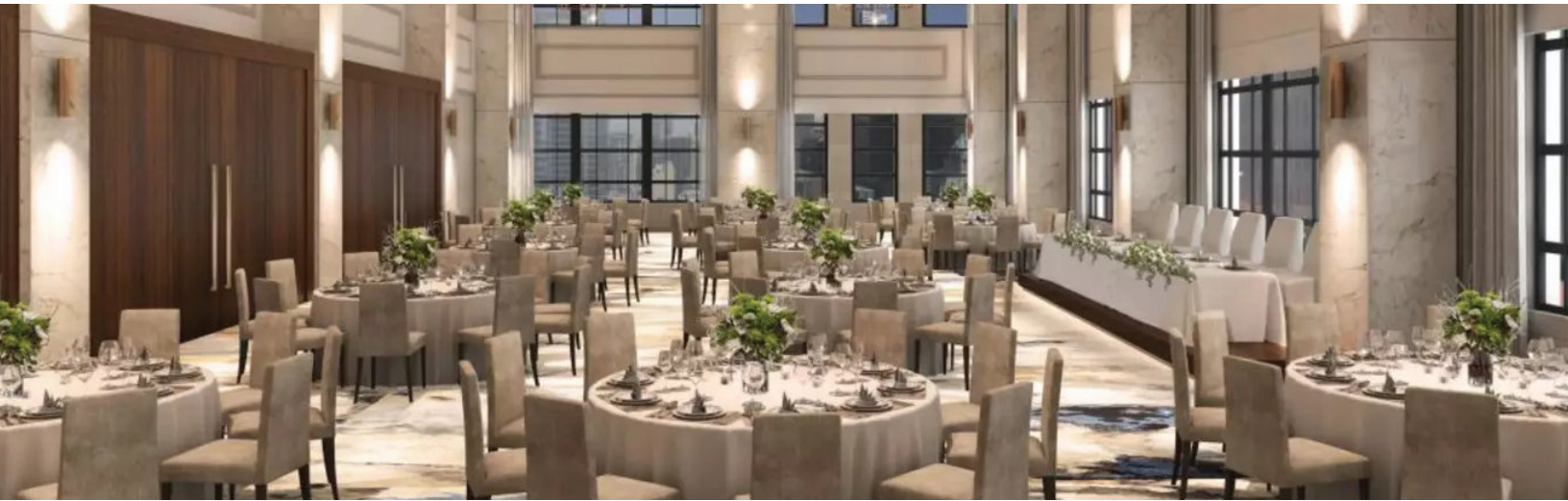




*The Sutton Place Hotel*  
TORONTO

Indulge yourself in traditional luxury and timeless elegance. Experience our commitment to providing exceptional service to our guests.



## Location

Serving as a contemporary landmark on Toronto's iconic corner of King Street West and Blue Jays Way, we stand proud among the buzz of the Entertainment District. Ours is an address deep-rooted in history—all within an exquisite, cosmopolitan environment and guaranteed to make an impact. Whether traveling for business or pleasure, welcome to The Sutton Place Hotel Toronto.



## Accommodations

Functionality and contemporary design come together beautifully to help you unwind during your stay, and we welcome guests to relax in luxurious comfort. Our spacious and well-appointed guestrooms are modern and inviting with elegant finishes and considerate amenities such as Smart TVs, complimentary Wi-Fi, and luxurious bathrooms.



## Food & Beverage

Located in the main entrance to our hotel, guests will be able to enjoy a first class onsite dining experience at Abrielle. Their coastal Mediterranean vibe brings bright flavours, vegetable-forward plates and outstanding cocktails. Abrielle is the perfect mix of vibrancy and timeless charm. This is the perfect oasis for people to share, connect, conversate and enjoy the feeling of true hospitality.



For information or to book your meeting, please contact:

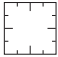
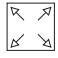
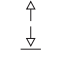
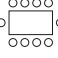

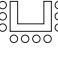


**Event Manager**

**Call:** (416) 915-3770

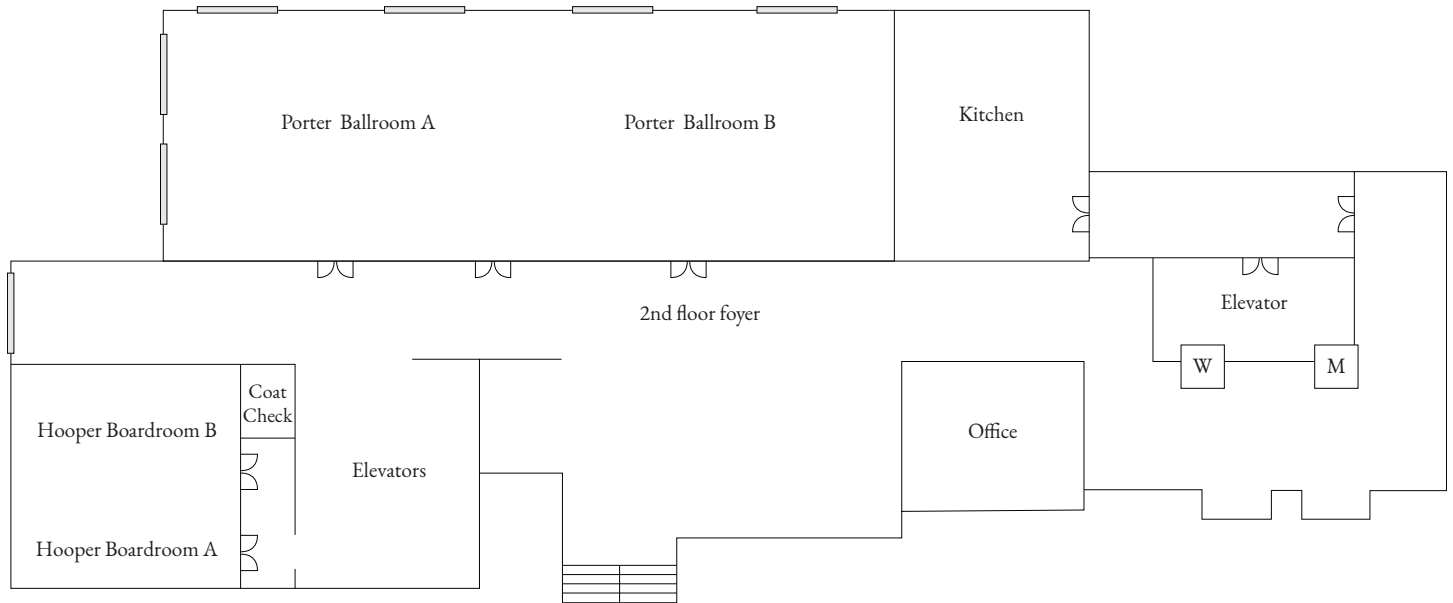
**Email:** [events\\_toronto@suttonplace.com](mailto:events_toronto@suttonplace.com)

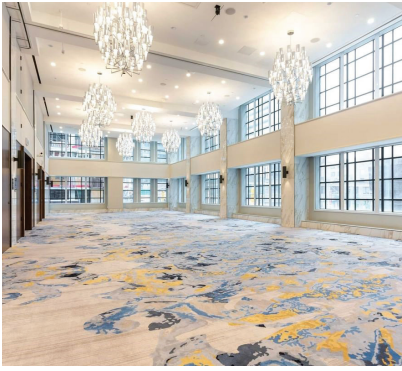
# Capacity Chart

Please note that the capacity outlines below are guidelines only. Maximum capacities will be adjusted based on additional final floorplan, number of tables, staging, dance floor, and/or audiovisual requirements.

	Porter Ballroom AB	Porter Ballroom A	Porter Ballroom B	Hooper Boardroom AB	Hooper Boardroom A	Hooper Boardroom B	Executive Lounge
 Square Footage	2,592	1,600	992	680	340	340	924
 Dimension	81' x 32'	50' x 32'	31' x 32'	40' x 17'	20' x 17'	20' x 17'	42' x 22'
 Ceiling Height	19'	19'	19'	10'	10'	10'	13'
 Boardroom	-	36	36	24	12	12	18
 Half Rounds of 10	156	72	48	-	-	-	-
 U-Shape	-	36	24	-	-	-	-
 Reception	225	80	45	-	-	-	45
 Theatre	188	80	40	-	-	-	-

# Floor Plans





## Porter Ballroom

Porter Ballroom has state of the art A/V including two screens and projectors that drop down from our 19 foot ceilings. With our black out screens located on all windows, allows for the perfect control of light projecting in from our floor to ceiling windows. Twelve crystal chandeliers span the entire ballroom. The Ballroom is dividable into two individual spaces, and for additional space, guests are able to enjoy our generous foyer, which can be transformed to suit all meeting and event requirements.



## Hooper Boardroom

Equipped with large boardroom tables, Hooper Boardroom is the perfect space to host private corporate meetings, break out spaces or enjoy a private dining experience. Our boardroom is dividable into two separate spaces, lined with ergonomic leather chairs, two 65" TV's and west facing wall-to-wall windows.



## Executive Lounge

Our 7th Floor Executive Lounge is one of the most unique spaces located in The Sutton Place Hotel Toronto. This multi-functional room can be transformed into a private cocktail party, bridal suite or even a hybrid boardroom meeting setup. Comfy seating, private lounge area and a large marble topped bar are just some of the distinctive features the Executive Lounge has to offer.

First-class amenities, and elegant guest rooms await you at  
The Sutton Place Hotel Toronto.

## So many reasons to stay

- Indoor pool
- Complimentary Wi-Fi
- Beautiful ballroom and meeting spaces
- Overnight valet parking
- Pet-friendly rooms
- Fitness centre
- On-site restaurant

