



# Meetings & Events at Sandman Signature Sherwood Park Hotel

Comfortable, sleek & stylishly modern, Sandman Signature Sherwood Park Hotel is four-star hospitality at its best, complete with elegant furnishings and impressive amenities to ensure our guests an outstanding experience.

The hotel features a versatile range of event space, customizable banquet packages, and an expert team dedicated to making your corporate meeting or social event a success through careful attention to detail, personalized experiences and seamless execution.

## EVENT VENUES

5

## EVENT SPACE

5,769 sq.ft

## VENUE CAPACITY

160

## GUEST ROOMS

229

## Features



Experienced event planner



Indoor swimming pool & whirlpool



Custom banquet packages



Fitness facilities



Complimentary Wi-Fi



Chop Steakhouse & Bar on-site



Complimentary parking

## Contact

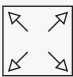

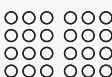
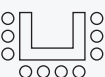
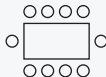


Please contact our banquet team for more information:

**Email:** [banquets\\_sherwoodpark@sandman.ca](mailto:banquets_sherwoodpark@sandman.ca)

**Call:** 587 456 5524

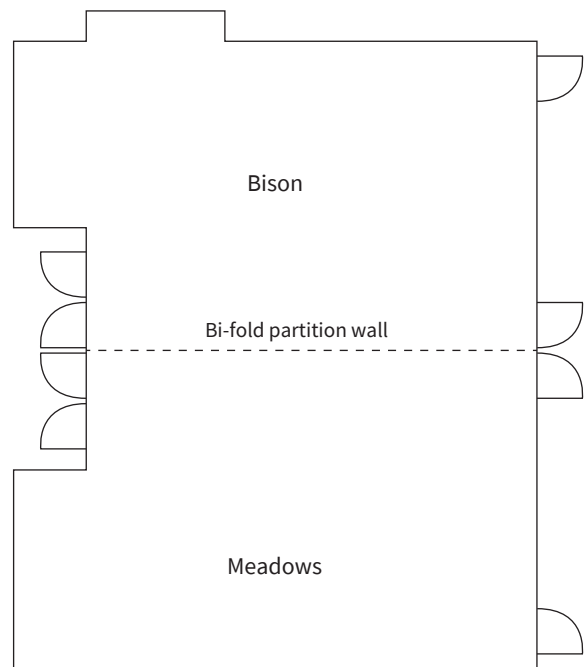
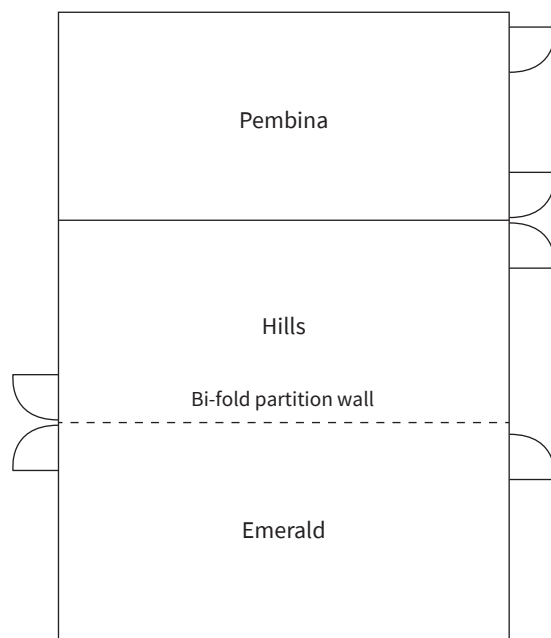


# Capacity Chart

							
ROOM	SQUARE FEET	CLASSROOM	THEATRE	U SHAPE	BOARDROOM	ROUNDS x 10	RECEPTION
PEMBINA	1098	28	120	28	28	70	100
EMERALD	1098	28	120	28	28	70	100
HILLS	1098	28	120	28	28	70	100
BISON	1300	40	160	40	40	90	130
MEADOWS	1175	30	130	30	30	80	110

Please note that all capacity numbers are guidelines. Maximum capacities will adjust based on additional tables, staging, dance floor, and/or audiovisual requirements.

## Floor Plans



True   
Canadian  
Hospitality